



Diagnostic Images

Diagnostic Images: MRCP spectrum

Meenakshi Paramasivan *

Department of Radiology, Kauvery Hospital, Tirunelveli, Tamil Nadu

*Correspondence

Clinical Images

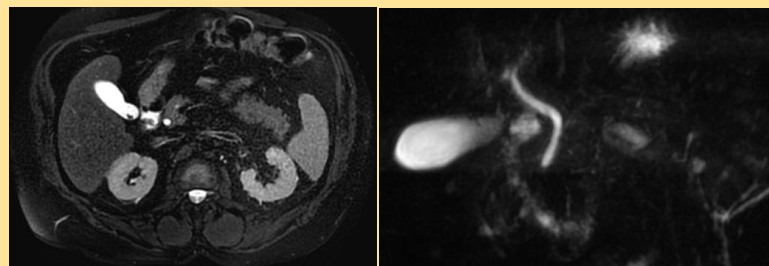


Fig (1): Cholelithiasis - Single calculus ; No Cholecystitis or Chole-
docholithiasis.

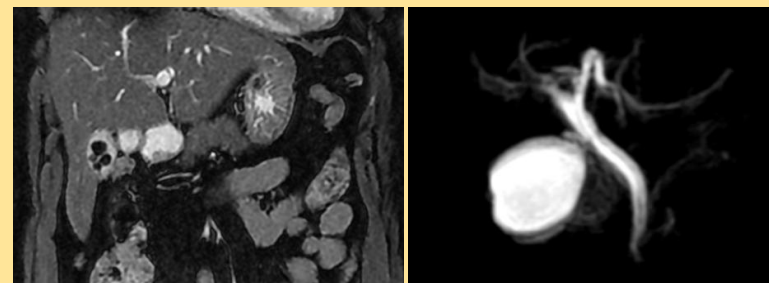


Fig (2): Cholelithiasis - Few GB calculi ; No cholecystitis or Chole-
docholithiasis.

Citation: Meenakshi Paramasivan. Diagnostic Images: MRCP spectrum. *Kauverian Med J.* 2026;3(7):108-110.

Academic Editor: Dr. Venkita S. Suresh

ISSN: 2584-1572 (Online)



Copyright: © 2026 by the authors. Submitted for possible open access publication under the terms and conditions.

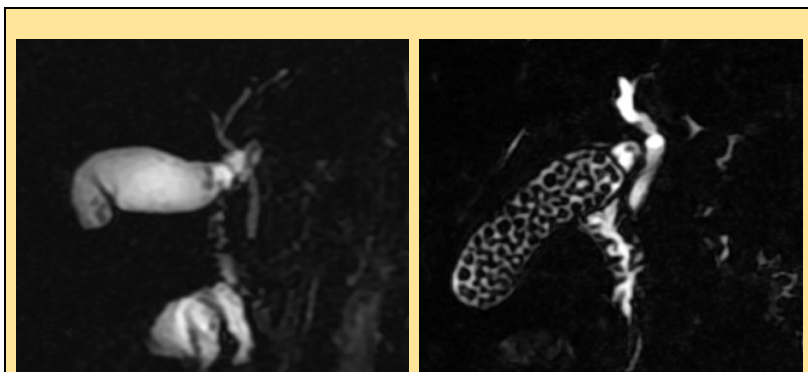


Fig (3): Cholelithiasis - Calculi in Phrygian Cap & Neck.; Cholelithiasis - Multiple calculi; No Cholecystitis or Choledocholithiasis.



Fig (4): Cholelithiasis & Choledocholithiasis



Fig (5): Large obstructive calculus at neck of GB with Acute Cholecystitis.

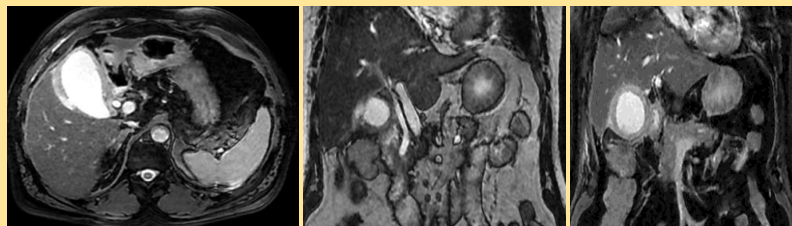
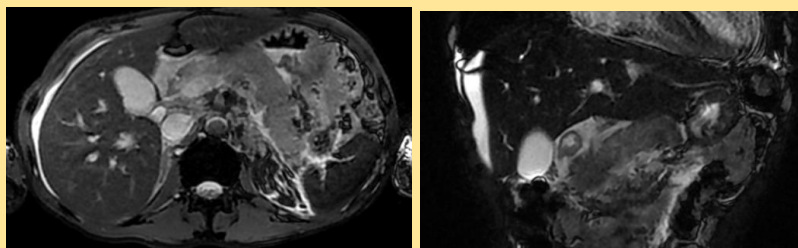
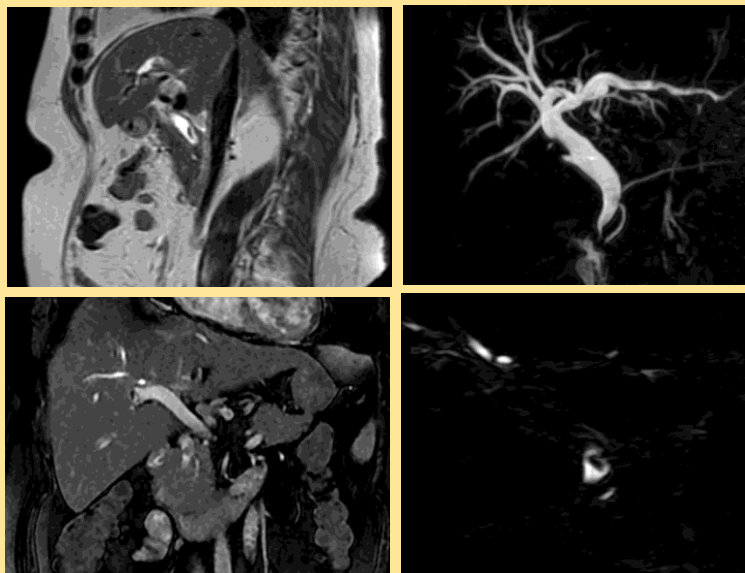


Fig (6): Acute cholecystitis with contained mucosal perforation and acute pancreatitis



Fig(7): Acute Edematous Pancreatitis with Sludge in GB, Ascites & Bilateral Pleural Effusion.



Fig(8): S/p Cholecystectomy - Benign Stricture distal CBD - Retained CBD stent fragments.