



Diagnostic Images

Diagnostic Images: MRI Spine

Meenakshi Paramasivan *

HOD - Department of Radiology, Kauvery hospital, Tirunelveli, Tamil Nadu

*Correspondence

Clinical Images

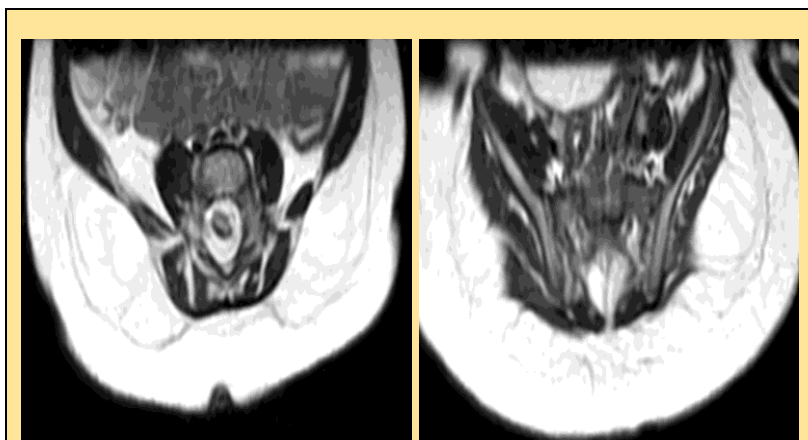


Fig (1): Cutaneous dimple in lumbosacral region & Spina bifida occulta of sacral vertebrae with open sacral hiatus

Citation: Meenakshi Paramasivan. Diagnostic Images: CT Brain Spotters. Kauverian Med J. 2026;3(8):81-82.

Academic Editor: Dr. Venkita S. Suresh

ISSN: 2584-1572 (Online)



Copyright: © 2026 by the authors. Submitted for possible open access publication under the terms and conditions.

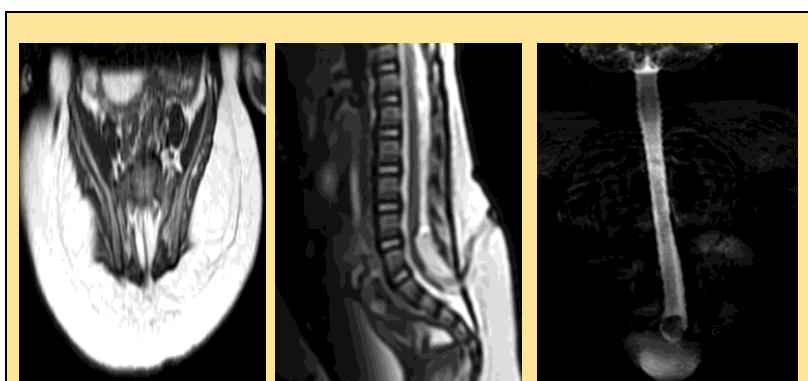


Fig (2): Dermal sinus tract connecting with cutaneous dimple & Low lying conus medullaris thickened filum terminale dermal sinus tract and MR Myelogram.

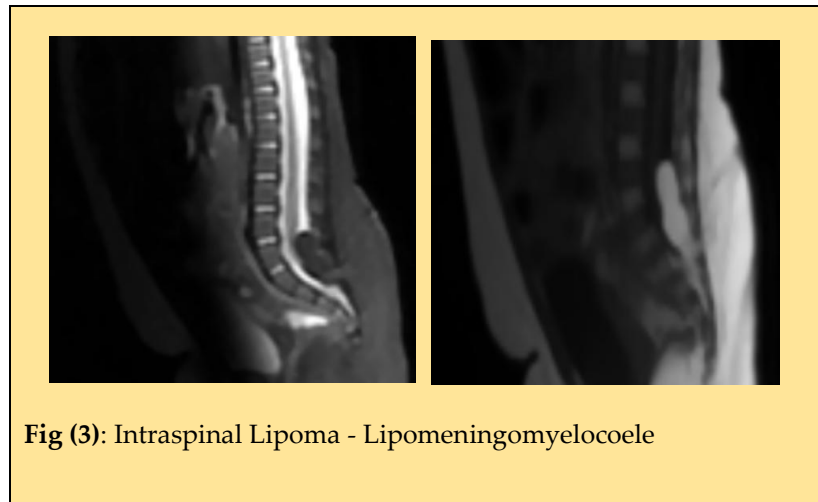


Fig (3): Intraspinal Lipoma - Lipomeningomyelocele

History: 6 months old female child with cutaneous dimple at low back.

Diagnosis : Features Of Occult Spinal Dysraphism.